



Australian Government

IP Australia

Discovery House, Phillip ACT 2606  
PO Box 200, Woden ACT 2606  
Australia  
Phone: 1300 651 010  
International Callers: +61-2 6283 2999  
Facsimile: +61-2 6283 7999  
Email: assist@ipaustralia.gov.au  
Website: www.ipaustralia.gov.au

**Official Notice**

**AUSTRALIAN OFFICIAL JOURNAL OF DESIGNS  
25 January 2007**

**Designs Act 2003  
Correction of Register**

The following corrections under Regulation 9.05 (1) have been made to details previously published in the Australian Official Journal of Designs:

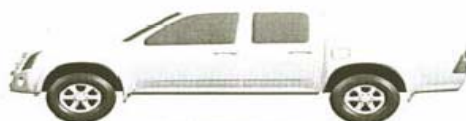
Registration Number	Amendment type	New details
311923	Representations	Representations as below



Front Left Side Perspective View



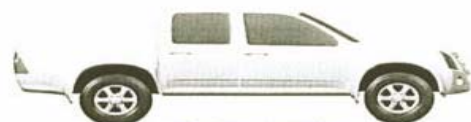
Front Right Side Perspective View



Front Elevational View



Right Side Elevational View



Rear Elevational View



Left Side Elevational View



Top Plan View



Australian Government

IP Australia

Discovery House, Phillip ACT 2606

PO Box 200, Woden ACT 2606

Australia

Phone: 1300 651 010

International Callers: +61-2 6283 2999

Facsimile: +61-2 6283 7999

Email: [assist@ipaaustralia.gov.au](mailto:assist@ipaaustralia.gov.au)

Website: [www.ipaustralia.gov.au](http://www.ipaustralia.gov.au)

**Contact:** IP Australia  
**Phone:** 1300 651 010  
**Fax:** +61 2 6283 7999  
**E-Mail:** [assist@ipaaustralia.gov.au](mailto:assist@ipaaustralia.gov.au)  
**Web:** [www.ipaustralia.gov.au](http://www.ipaustralia.gov.au)